

REPAIR INSTRUCTIONS V1.8

Safety information

DANGER!

Material damage and personal injury due to improper repair!



- Before any cleaning, maintenance or repair, disconnect the Kill Switch magnet and remove the battery from the jetboard!
 - Only use original Lampuga spare parts!
 - Pay attention to the specified torque values!
 - Do not store the dryer cartridge near children. The contents of the dryer cartridge can be swallowed!
 - Position the jetboard stable and non-slip on a solid surface. Secure all parts against falling down!
-

Important information

- If any part of the information in this repair manual is unclear to you, do not proceed with the installation. Contact your Lampuga dealer or Lampuga support.
- Improper repairs may result in a defect or total loss of your jetboard! Only carry out repairs that correspond to your level of knowledge.

List of required tools

Tool Number	Description	Article Number
W0	Adapter ¼" to ½"	(Art. No. 9910104, part of Tool Kit*)
W1	Torque wrench Famex 10872 cw/ccw operation	(Art. No. 9910101, part of Tool Kit*)
W2	Special tool Nozzle	(Art. No. 4410020, part of Tool Kit*)
W3	Special tool "Impeller open"	(Art. No. 5710027, part of Tool Kit*)
W4	Special tool "Impeller closed"	(Art. No. 5710026, part of Tool Kit*)
W5	Impeller remover	(Art. No. 5710025, part of Tool Kit*)
W6	Wrench socket SW 17	(Art. No. 9910102, part of Tool Kit*)
W7	Wrench socket SW 18	(Art. No. 9910103, part of Tool Kit*)
W9	Special tool Dryer Cartridge	(Art. No. 9910080, part of Tool Kit*)
W11	Pressure ring	(Art. No. 9910110, part of Tool Kit*)
W12	Support ring	(Art. No. 9910111, part of Tool Kit*)
W8	Slot screwdriver 3 mm	(not included in Tool Kit)
W15	Open end wrench, size 8 mm	(not included in Tool Kit)

*Tool Kit, Art. No. 9910100

Not included in Tool Kit

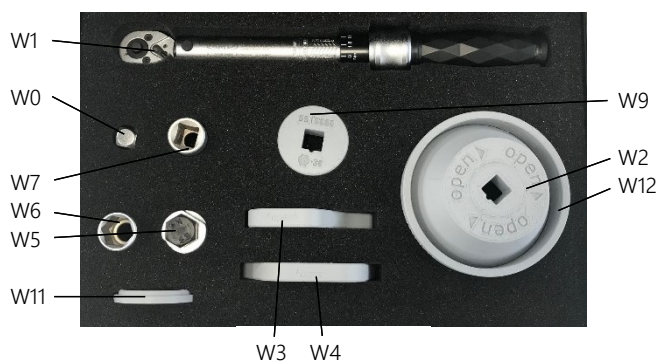


Table of content

1	Removing of the Nozzle and the Rear Cover	4
2	Changing of the Impeller and the Wear Ring.....	4
2.1	Removing of the Impeller	4
2.2	Removing of the Wear Ring.....	5
2.3	Mounting of the new Wear Ring.....	5
2.4	Mounting of the Impeller	6
3	Exchanging of the Nozzle.....	7
3.1	Identifying the Nozzle-version.....	7
3.2	Separation of the Stator and the Click Nozzle	7
3.3	Pressing-in the Click Stator	8
4	Changing of the Dryer Cartridge	8
4.1	Replacing of the Dryer Cartridge	8
5	Mounting of the Nozzle and the Rear Cover	9
6	Replacing of the Slide Rings	10
6.1	Removing of the Slide Rings.....	10
6.2	Mounting the new Slide Rings	10
6.3	Optimizing the sliding effect of the rings.....	10
7	Exchanging of the Splash Water Seal	11
7.1	Identifying the version of Splash Water Seal	11
8	Exchanging of the Splash Water Seal	12
8.1	Mounting of the Splash Water Seal	12
8.2	Mounting of the splash frame.....	12
9	Mounting of the Wireless Remote Bracket.....	13
10	Mounting of the Kill Switch Magnet (in case of loss).....	13

1 Removing of the Nozzle and the Rear Cover

🔧 W0+W1+W2 **Note: Left-hand thread - Loosen clockwise!**

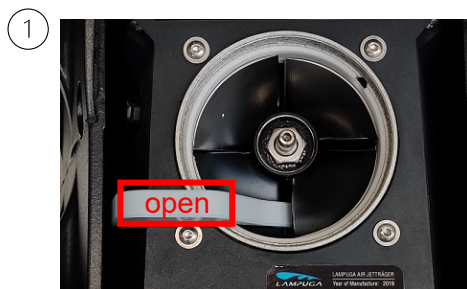


2 Changing of the Impeller and the Wear Ring

First step: Removing of the Nozzle and the Rear Cover. See chapter 1

2.1 Removing of the Impeller

🔧 W3 **Note: Consider the labelling „open“.**



🔧 W0+W1+W3+W6

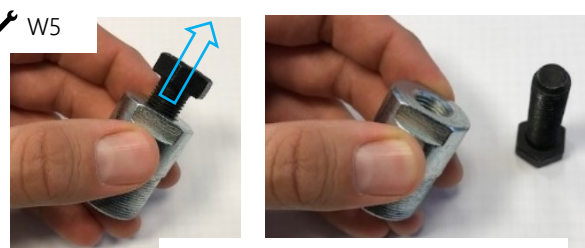


Use left hand to stabilize tool in correct position



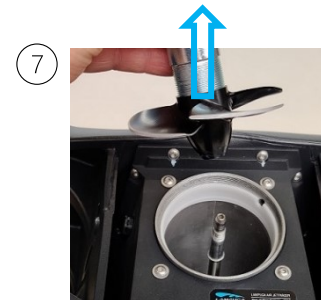
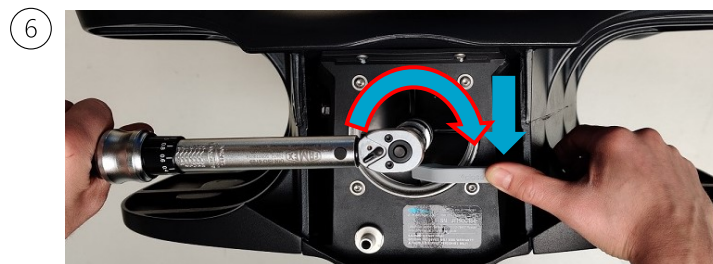
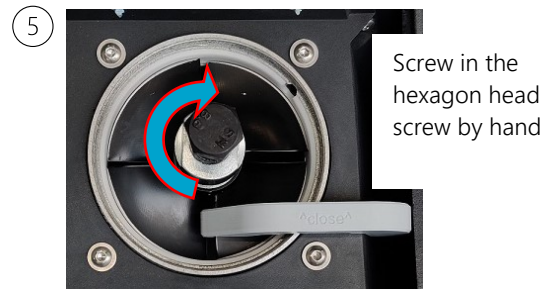
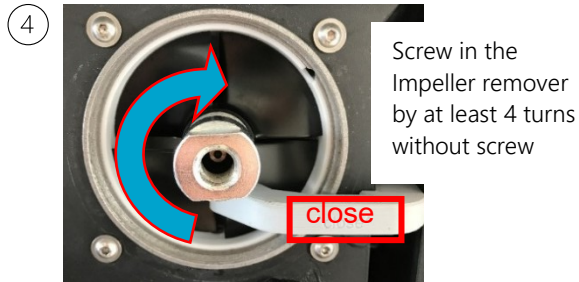
Remove nut and washer

🔧 W5



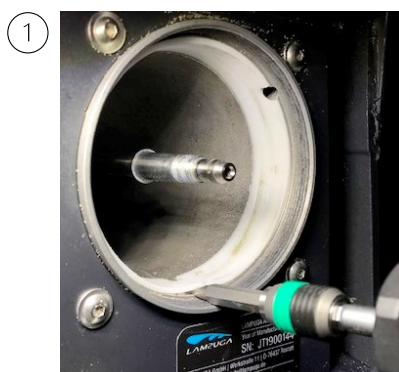
Separate hexagon head screw from impeller remover

W4+W5 **Note:** Consider the labelling "close".

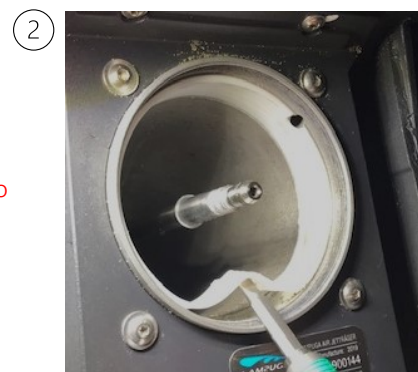


2.2 Removing of the Wear Ring

W8 or similar **Note:** Remove the Wear Ring only if it is worn or defective.



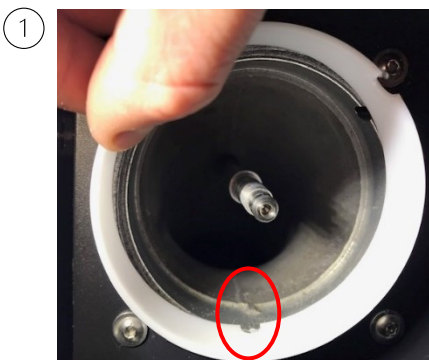
Note: Be careful not to damage the thread!



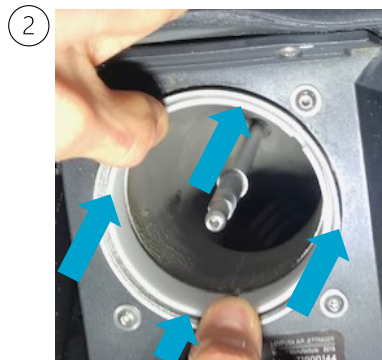
Note: It might be inevitable to break the old Wear Ring! Remove the ring only if you have a spare part available.

2.3 Mounting of the new Wear Ring

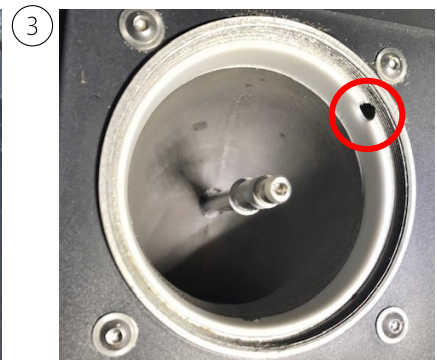
Note: Ensure that the cooling water outlet is free and consider the anti-rotation device.



Note: Anti-rotation device



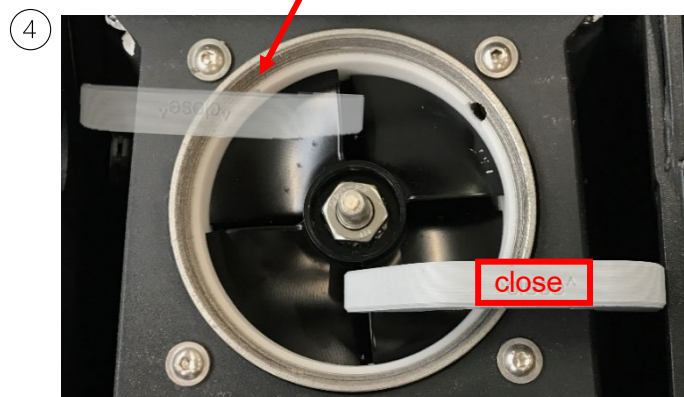
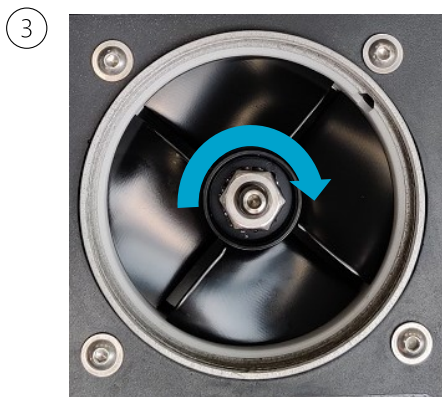
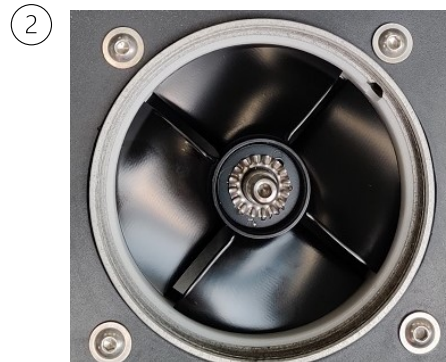
Note: Insert straight and parallel




Note: make sure not to cover the cooling opening

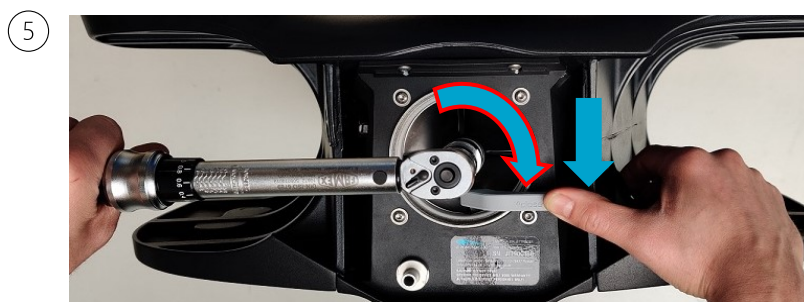
2.4 Mounting of the Impeller

 W4



Note: Consider the labelling „close“

 W0+W1+W4+W7



Tightening torque: 15 Nm

Note: Pay attention to the release of the torque spanner.

Mounting of the Nozzle and the Rear Cover - see chapter 5

3 Exchanging of the Nozzle

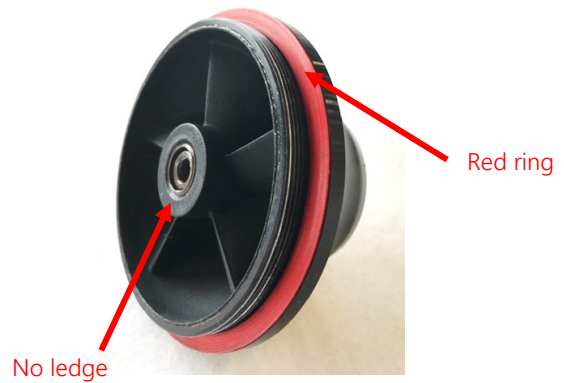
First step: Removing of the Nozzle. See chapter 1

3.1 Identifying the Nozzle-version



Nozzle with click stator

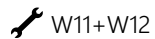
Separation of Stator and Nozzle is possible



Nozzle without click stator

Separation (3.2) is not possible

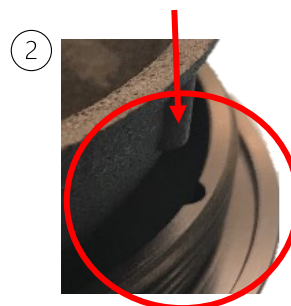
3.2 Separation of the Stator and the Click Nozzle



Position the Click Nozzle on the support ring and place the pressure ring on the Click Nozzle outlet. Place a flat object (e.g. wooden block) and loosen the Stator from the Click Nozzle with a hammer.



3.3 Pressing-in the Click Stator



Note: Positioning of Click Stator and Nozzle



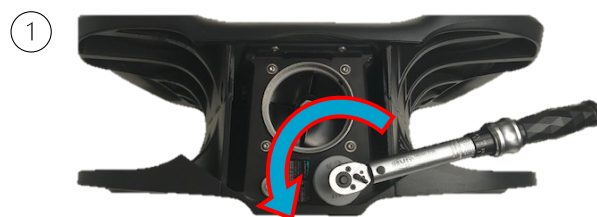
Mounting of the Nozzle - see chapter 5

4 Changing of the Dryer Cartridge

First step: Removing of the Nozzle and the Rear Cover. See chapter 2

4.1 Replacing of the Dryer Cartridge

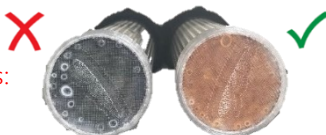
🔧 W0+W1+W9



Note: plastic parts, handle with care to avoid damage



Note: Saturation of Dryer Cartridge is indicated by dark colored granules: replacement needed!



Note: Clean the sealing surface with a lint-free cloth and apply some silicone grease to the seal of the Dryer Cartridge. When Powerbox is open avoid any objects from falling inside. Always store the Dryer Cartridge in an airtight bag to avoid unwanted saturation. Please exchange the cartridge quickly!



W0+W1+W9



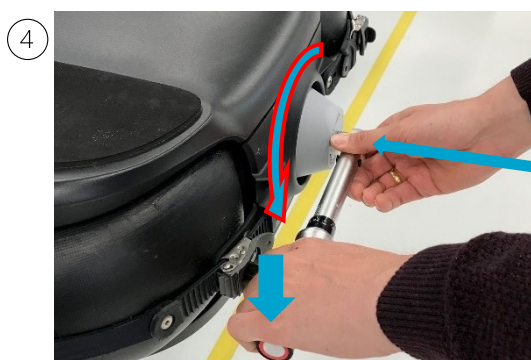
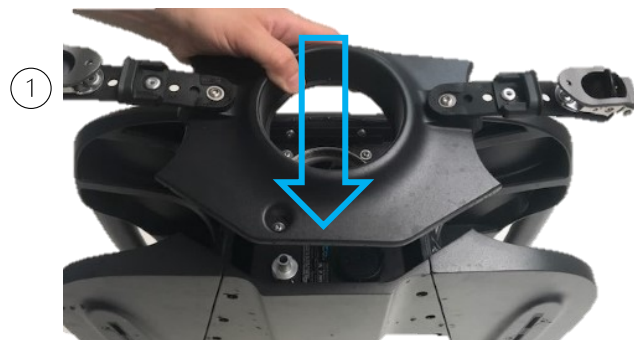
Tightening torque: 8 Nm

Note: 8 Nm are reached with little force at the torque spanner!
Too much torque = risk of damaging tool, Powerbox or cartridge.

To avoid unwanted shifting fix the head of the torque spanner with one hand.

5 Mounting of the Nozzle and the Rear Cover

W0+W1+W2



Tightening torque: 25 Nm
Note: Left-hand thread -
Tighten counterclockwise!

To avoid unwanted shifting fix the head of the torque spanner with one hand.

6 Replacing of the Slide Rings

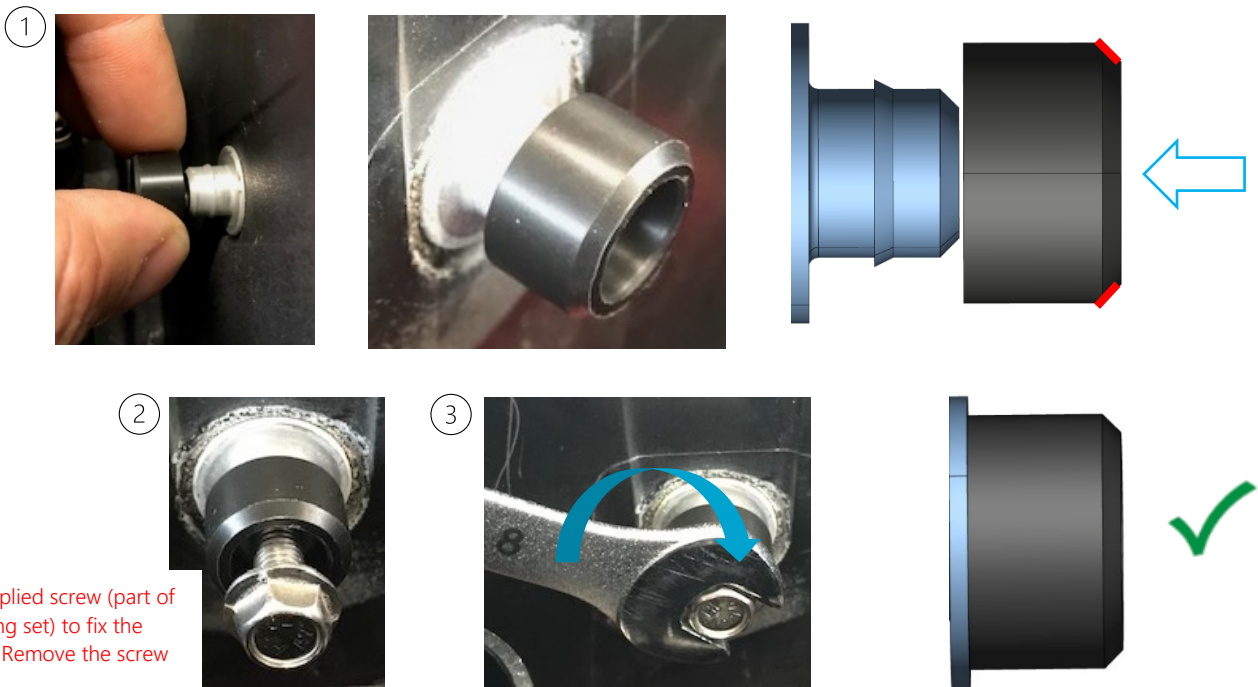
6.1 Removing of the Slide Rings

W8



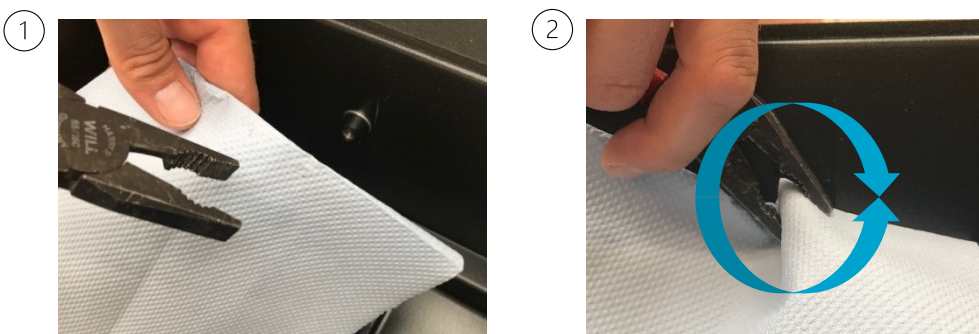
6.2 Mounting the new Slide Rings

W10 **Note: Consider phase direction!**



6.3 Optimizing the sliding effect of the rings

Turn the Slide Rings with suitable pliers (protect the ring from damage e.g. with a cloth) until it can be turned easily clockwise and counterclockwise.



7 Exchanging of the Splash Water Seal

7.1 Identifying the version of Splash Water Seal

Before ordering please make sure to identify your needed Splash Water Seal.

Replace only with identical parts!

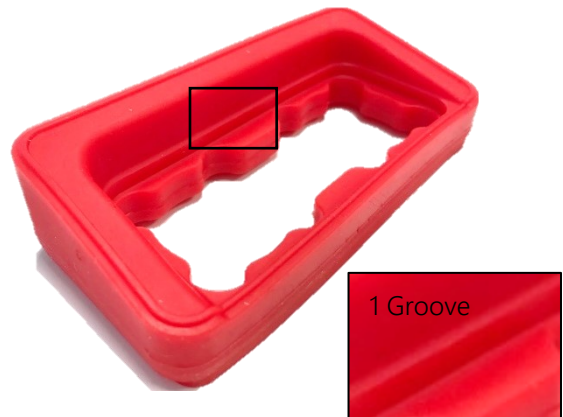
Version 1 (Powerbox No. \leq 2000377)

Art.No.: 1210044



Version 2 (Powerbox No. $>$ 2000377)

Art.No.: 1210037



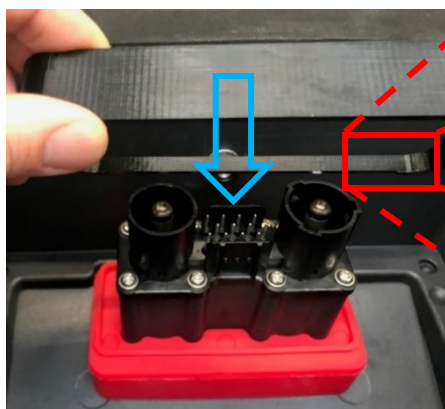
8 Exchanging of the Splash Water Seal

8.1 Mounting of the Splash Water Seal

Push sealing carefully over the power connector until angled surface meets the Powerbox-surface completely.

8.2 Mounting of the splash frame

①



Consider phase at the bottom

②



Push the frame down to the Powerbox surface.

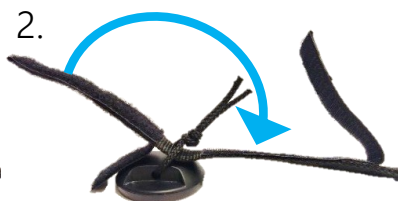
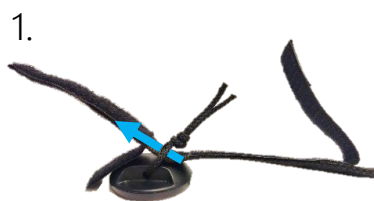
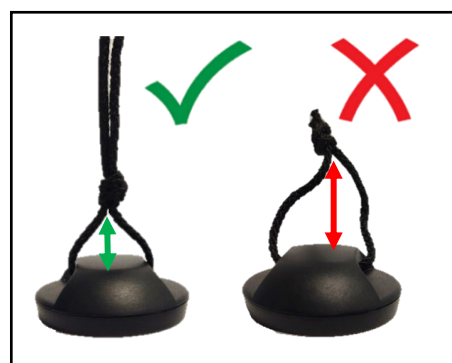
9 Mounting of the Wireless Remote Bracket

1. Apply threadlocker
2. Tighten the screws with a suitable tool



10 Mounting of the Kill Switch Magnet (in case of loss)

Knot the rope to the magnet:



Position the knot inside the Velcro

